

MIILA MIILA  
LA MIILA MIILA

MONTREAL - CANADA 

# STUDY

TRAVEL & ENJOY

LANGUAGE SCHOOL



ENGLISH  FRENCH



# WELCOME

to the Montreal International Institute of Language Arts, M.I.I.L.A. Located in the heart of the second largest city in Canada, Montreal.



Situated in the hub of Montreal's bustling student and shopping district, and ideally located three minutes from De La Savane Metro Station, M.I.I.L.A. offers you a cosmopolitan language-learning experience in a cozy and familial environment. Small classes ensure personal attention and fast learning. Extracurricular activities organized by the school will guide you through the diversity of cultural and social life of Montreal. Ice skating on Wednesday afternoon, kayaking on a Friday? You haven't LIVED the four seasons until you've spent them at M.I.I.L.A.



Our multicultural variety of students is reflected by our international staff, in an open and friendly atmosphere that will become your home away from home. Speaking of home, our carefully selected homestays and residences will guarantee you a comfortable and safe environment when you're not out making the most of the city.

Our institution offers a large variety of services to help make your stay spectacular. You can benefit from around-the-clock Internet access, lunch and lounge area and a convenient central location that allows you to be close to most tourist spots in the city, like the Old Port, the Underground City, Mont Royal, and many more.

FREE ADDITIONAL WORKSHOPS



When you study at M.I.I.L.A. you will get the added value of additional free conversation workshops in English and/or French (8 hours total per week).

MILA PATHWAY PROGRAMS



M.I.I.L.A. is affiliated with other institutions offering a number of academic career-oriented programs. This allows our students to benefit from special packages, should they decide to extend their stay in Montreal to further their learning experience at one of these schools. The Academy of Arts and Design offers programs in interior design, fashion design, graphic and web design, advertising and web design, animation design and fashion merchandising. For further information about the institution and courses, please visit [www.aadmtl.com](http://www.aadmtl.com).

TECCART Institute offers programs in telecommunications, industrial electronics and robotics, Information management, interior design, fashion design and marketing, advertising design, 3D animation, real estate, insurance brokerage, law and child education. For further information about this institutions and their courses, please visit [www.teccart.qc.ca](http://www.teccart.qc.ca).



“Having never previously left Europe, the idea of going to study French in North America seemed like a strange choice at first. After spending a summer in Montreal, studying during the day and spending my evenings on terraces and at concerts, all the time surrounded by French and English, I know I could never have got this experience anywhere else! ”



# WHY SHOULD YOU STUDY IN MONTREAL?

- Multicultural and multi-ethnic city
- Unique blend of European charm and North-American lifestyle
- Diverse and unique gastronomy
- High profile events and festivals (Jazz Festival, Formula 1, Cirque du Soleil, World Class Tennis Tournaments)
- Safe and environment-conscious city
- Plenty of indoor and outdoor activities for all 4 seasons of the year
- Opportunity to study and practice both English and French in the same city
- Safe, clean and reliable public transit system
- Most affordable of the major Canadian cities

## WHY SHOULD YOU CHOOSE M.I.I.L.A.?

- Great centrally located facility (De La Savane Metro)
- Warm and friendly international atmosphere
- Dynamic and experienced staff
- Competitive prices, discounts and special packages
- Small groups
- 12 levels of English and 11 levels of French
- Carefully selected housing for students
- Modern facilities (student lounge, dining area, high-speed wireless internet)
- Great outdoor
- A fast-paced and challenging study environment that values a balance between study and leisure
- Lots of fun activities and excursions



# TUITION FEES INTERNATIONAL STUDENTS

>> PRICE LIST

NB. OF WEEKS	27 LESSONS/WEEK	36 LESSONS/WEEK
	PREMIUM INTENSIVE WEEKLY RATES (FREE CONVERSATION CLASSES, 8 HOURS)	PREMIUM SUPER-INTENSIVE WEEKLY RATES (FREE CONVERSATION CLASSES, 8 HOURS)
1 TO 8	\$325	\$385
9 TO 23	\$315	\$365
24 TO 32	\$305	\$345
33+	\$275	\$335

## OTHER SERVICES

- Registration Fee.....	\$150
- Accommodation placement fee*.....	\$200
- Airport Pick-Up .....	\$100
- Airport Drop-Off .....	\$70
- Airport transfer (round trip) .....	\$150
- Custodianship.....	\$120
- Private courses.....	\$40/h
- Health Insurance Fee .....	\$2.50/day
- Materials (per level) .....	\$40-\$70



**EduCanada**  
A world of possibilities  
Un monde de possibilités



\* Accommodation placement Fee is mandatory when booking accommodation through MIILA

# ACCOMMODATION FEES

TYPE OF ACCOMMODATION	WEEKLY RATES
STANDARD RESIDENCE (NO MEALS)	\$169
RESIDENCE - DOWNTOWN (PRIVATE BATHROOM, NO MEALS)	\$363
PREMIUM RESIDENCE - DOWNTOWN (SHARED BATHROOM, NO MEALS)**	\$375
PREMIUM RESIDENCE - DOWNTOWN (PRIVATE BATHROOM, NO MEALS)**	\$438
HOMESTAY (2 MEALS/DAY)	\$200
HOMESTAY (3 MEALS/DAY)	\$215
HOMESTAY MINORS (2 MEALS/DAY)	\$233
HOMESTAY MINORS (3 MEALS/DAY)	\$248



## PRICE PER NIGHT

TYPE OF ACCOMMODATION	(1-14)	(15-29)	(30-32)	(33+)
STUDIO	\$85	\$80	\$70	\$60
SUITE JUNIOR	\$100	\$85	\$75	\$70
APARTMENT 2 ROOMS	\$120	\$100	\$85	\$80

\*\* Minimum stay 4 weeks

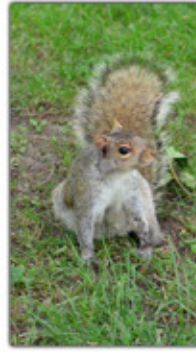
Extra nights are pro-rated in most options above. Prices subject to change without notice.

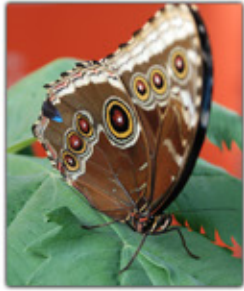
# MONTREAL

Montreal is as romantically traditional as it is cutting-edge innovative, as dynamically cosmopolitan as it is small-town friendly. Yet despite this diversity, an underlying homogeneity exists in this vibrant population who collectively and confidently "live and let live"— and do it well.

The truly international flavour in Montreal is evident in the countless fine restaurants which serve cuisine from all around the world, and in the self-contained ethnic communities, like Little Italy, a lively area of espresso bars and delectable Italian cuisine.

For sizzling nightlife, check out Crescent and Saint-Laurent streets where you will find fantastic and entertaining nightlife, clubs, bars and restaurants – the best in Canada by far!





The "joie de vivre" is palpable and contagious in this vibrant and culturally diverse and cosmopolitan city. Whether sipping a cappuccino at an outdoor cafe, riding a BIXI bike on one of the many bicycle paths in the city or walking in the historic Old Port district, you cannot escape the excitement and energy that exists in this city. Montreal draws students and tourists all year long and enjoys 4 distinctive seasons with unique and fun activities for each season. The summer buzzes with excitement with the return of the warm weather and there are numerous outdoor festivals and shows all around the city.

Another great advantage of Montreal is its unique location! It's only a few hours away from other great destinations like New York City, Niagara Falls, Quebec City, Boston, Toronto, Mont Tremblant (and the spectacular Laurentian Mountains and lakes), Ottawa and many many more.

Whether you are an ambitious student, a young professional who wants to expand your horizons or someone who is looking for change and progress, M.I.I.L.A. should be your first choice to study English or French. More than a language school, M.I.I.L.A. is a second home for all students. So come and enjoy everything Montreal has to offer – come study at M.I.I.L.A.!



# SCHOOL CALENDAR 2018

MONTREAL INTERNATIONAL INSTITUTE OF LANGUAGE ARTS

Official start dates ■ Official end dates ■ Official Holiday ■

January							February							March							April						
Sun	Mon	Tues	Wed	Thu	Fri	Sat	Sun	Mon	Tues	Wed	Thu	Fri	Sat	Sun	Mon	Tues	Wed	Thu	Fri	Sat	Sun	Mon	Tues	Wed	Thu	Fri	Sat
7	1	2	3	4	5	6	4	5	6	7	1	2	3	4	5	6	7	1	2	3	1	2	3	4	5	6	7
8	9	10	11	12	13	14	11	12	13	14	15	16	17	11	12	13	14	15	16	17	8	9	10	11	12	13	14
15	16	17	18	19	20	21	18	19	20	21	22	23	24	18	19	20	21	22	23	24	15	16	17	18	19	20	21
22	23	24	25	26	27	28	25	26	27	28				25	26	27	28	29	30	31	22	23	24	25	26	27	28
29	30	31												29	30	31					29	30					

May							June							July							August						
Sun	Mon	Tues	Wed	Thu	Fri	Sat	Sun	Mon	Tues	Wed	Thu	Fri	Sat	Sun	Mon	Tues	Wed	Thu	Fri	Sat	Sun	Mon	Tues	Wed	Thu	Fri	Sat
6	7	1	2	3	4	5	3	4	5	6	7	1	2	1	2	3	4	5	6	7	5	6	7	1	2	3	4
13	14	15	16	17	18	19	10	11	12	13	14	15	16	8	9	10	11	12	13	14	12	13	14	15	16	17	18
20	21	22	23	24	25	26	17	18	19	20	21	22	23	15	16	17	18	19	20	21	19	20	21	22	23	24	25
27	28	29	30	31			24	25	26	27	28	29	30	22	23	24	25	26	27	28	26	27	28	29	30	31	

September							October							November							December						
Sun	Mon	Tues	Wed	Thu	Fri	Sat	Sun	Mon	Tues	Wed	Thu	Fri	Sat	Sun	Mon	Tues	Wed	Thu	Fri	Sat	Sun	Mon	Tues	Wed	Thu	Fri	Sat
2	3	4	5	6	7	1	7	8	9	10	11	12	13	4	5	6	7	1	2	3	2	3	4	5	6	7	1
9	10	11	12	13	14	15	14	15	16	17	18	19	20	11	12	13	14	15	16	17	9	10	11	12	13	14	15
16	17	18	19	20	21	22	21	22	23	24	25	26	27	18	19	20	21	22	23	24	16	17	18	19	20	21	22
23	24	25	26	27	28	29	28	29	30	31				25	26	27	28	29	30		23	24	25	26	27	28	29
30																					30	31					



## SCHEDULES

SEMI-INTENSIVE \*18 LESSONS  
 PREMIUM INTENSIVE \*27 LESSONS  
 PREMIUM SUPER INTENSIVE \*36 LESSONS

## MORNING

HOURS	MONDAY	TUESDAY	WEDNESDAY	THURSDAY	FRIDAY
09:00 - 11:00		LANGUAGE TECHNIQUES			
11:00 - 11:10		BREAK			
11:10 - 12:00		LANGUAGE PRACTICES			
12:00 - 12:30		LUNCH			
12:30 - 13:30		CONVERSATION			
13:30 - 15:00		CONVERSATION			

## AFTERNOON

HOURS	MONDAY	TUESDAY	WEDNESDAY	THURSDAY	FRIDAY
12:00 - 13:30		CONVERSATION			
13:30 - 15:30		LANGUAGE TECHNIQUES			
15:30 - 15:40		BREAK			
15:40 - 16:30		LANGUAGE PRACTICES			
16:30 - 17:00		BREAK			
17:00 - 18:00		CONVERSATION			

# REFUND AND CANCELTION POLICIES

The following is an agreement between the Montreal International Institute of Language Arts (M.I.I.L.A.) and the attending student. Please make sure that you understand and read this document before you complete your enrollment and pay your fees. Please keep a copy of the signed agreement for your records. Should you have any questions please do not hesitate to contact us either by e-mail at [info@miila.ca](mailto:info@miila.ca) or by phone at (514) 509-4242.

Please note that the following fees are NON-REFUNDABLE:

- Registration fee
- Accommodation placement fee (if applicable)
- Medical insurance (if applicable)
- Airport pick-up or drop-off fees (Please provide your arrival date, time and flight number at least one (1) week prior to your arrival. If you do not arrive at the airport within 1 hour of your scheduled time, you will NOT be refunded for this service)

Special packages or any package to which a promotion was applied

## PERMANENT RESIDENTS AND CANADIAN STUDENTS

If you wish to withdraw from a program at M.I.I.L.A., you must first provide a written letter (signed and dated) including a valid reason for your withdrawal or cancellation. Until this letter has been received, you will be considered a registered program participant. Please note that non-attendance is not a valid reason.

## INTERNATIONAL STUDENTS

### 1. IF YOUR VISA HAS BEEN DENIED:

A FULL REFUND of tuition fees (less the registration fee) will be granted to students whose visa applications were denied by Immigration Canada for the purpose of studying at M.I.I.L.A. In order to receive your refund, please provide us with a letter from the Canadian Embassy stating that your entry visa to Canada was denied, along with your refund request.

### 2. AFTER YOU HAVE RECEIVED YOUR VISA OR IF NO VISA IS REQUIRED:

If you wish to withdraw from a program at M.I.I.L.A., you must first provide a written letter (signed and dated) including a valid reason for your withdrawal or cancellation. Until the letter has been received, you will be considered a registered program participant. Please note that non-attendance is not a valid reason.

#### Additionally:

You must demonstrate that your stay in Canada and your visa status are legal, or that you will be leaving the country (plane ticket).

M.I.I.L.A. requires proof that you are attending another school that meets your current visa requirements.

If you already have a student visa, you will have to re-apply for a new one. For students who have applied through an agency, please contact your agent for a refund. Or M.I.I.L.A. will require proof that you are leaving Canada earlier than originally scheduled (copy of plane ticket).

Once you have started the session, the first 4 weeks of your tuition and accommodation fees are non-refundable.

Refunds for unused portions of your tuition are calculated as indicated in the table below:

From 2 weeks prior to the start date up to 10% of course duration	More than 10 % and up to 30 % of course duration	More than 30% of course duration
50% refund	30% refund	No refund

### 3. MODIFICATIONS:

Modifications to course dates may be made only once at a cost of \$100 CAD. Please note that this fee is non refundable.

#### Disclaimer:

M.I.I.L.A reserves the right to cancel or defer courses and alter class timetables should the number of students be insufficient. M.I.I.L.A will offer private or semi-private courses of a shorter duration to replace the cancelled courses or M.I.I.L.A will refund tuition fees for services not delivered as a result of such a cancellation. If you are eligible for a refund under the above conditions, you will receive your refund within 30 to 60 days following the reception of your written notice of cancellation, or of M.I.I.L.A's written notice of dismissal.



# PROGRAMS

## ESL and FSL courses

### **M.I.I.L.A.'s core programs are ESL and FSL courses.**

We keep our groups small (6 to 12 students) to ensure optimal learning opportunities and focused attention, and each class curriculum was carefully designed by our experienced teachers and a team of professionals. Our teachers are all TESL certified and/or have pertinent university degrees. Their comprehensive teaching methods allow for better learning and assimilation of foreign languages, and their effective coaching and mentoring will help pinpoint your strengths and weaknesses, guiding you towards the successful achievement of your linguistic goals.

Our sessions last four (4) weeks. Short tests and quizzes are periodically given throughout the first three (3) weeks.

During the fourth "Exam Week", students will have to pass several exams, including written tests, interviews with teachers and class presentations. Students will be notified before the last day of the session whether or not they have successfully completed their level.

## Start Dates

M.I.I.L.A. offers the possibility to begin a program on any given Monday, but strongly recommends choosing one of the official start dates.

Our counsellors can recommend the best start dates during the registration process.

## English as a Second Language (ESL)

M.I.I.L.A. offers 12 levels of ESL, at different intensities: semi-intensive, intensive and super-intensive. Depending on your level, your classes will either be in the morning or in the afternoon. All schedules include two 10-minute breaks.

### Beginner Levels (INTRO to 4)

At these levels, students acquire the basic knowledge necessary to be functional in everyday situations. They also learn to talk about general topics. Various interesting activities are part of the learning process and help students master all the basic elements of the foreign language.

### Intermediate Levels (5 to 8)

At intermediate levels, students add to their basic knowledge and become more confident using the foreign language. Contextual grammar and communication activities are essential parts of the courses. Students begin to function comfortably in most situations.

### Advanced Levels (9 to 12)

More challenging texts are introduced, and emphasis is on speed and comprehension. Students start to focus on such skills as taking notes, summarizing, drafting presentations and writing essays. Students who complete these levels should have the necessary language skills to pursue technical or academic studies and function effectively in a work environment.

## French as a Second Language (FSL)

M.I.I.L.A. offers 11 levels of FSL, at different intensities: semi-intensive, intensive and super-intensive. Depending on your level, your classes will either be in the morning or in the afternoon. All schedules include two 10-minute breaks.

### Beginner Levels (INTRO to 3)

At these levels, students acquire the basic knowledge necessary to be functional in everyday situations. They also learn to talk about general topics. Various interesting activities are part of the learning process and help students master all the basic elements of the foreign language.

### Intermediate Levels (4 to 7)

At intermediate levels, students will add to their basic skills and expand their knowledge of French grammar and idioms. They will also start participating in basic group discussions and debates, and be asked to write short essays and prepare class presentations.

### Advanced Levels (8 to 11)

More challenging texts and an introduction to French literature, Students will also participate in more advanced group discussions and debates, and be asked to write more extensive essays and prepare class presentations.

If you wish to improve your language skills faster, or if you are not staying in Montreal for too long, this program will be perfect for you. It combines the Premium Intensive Program courses with a selection of workshops and elective courses. The program consists of 36 lessons per week. A minimum number of students may be required to open certain elective courses.

Please note that we do not offer elective courses to beginners, as their language skills are still basic. Instead, we offer those students additional grammar and/or conversation workshops, or other workshops which will better suit their needs.

Premium Intensive

The Premium Intensive Program is a popular choice for international students. It includes 27 lessons of grammar and conversation courses weekly (listening-speaking-reading-writing) which will help improve your language skills through a variety of activities, games, practical exercises, additional workshops and real life situations. Depending on your level, your classes may be scheduled in the morning or in the afternoon.

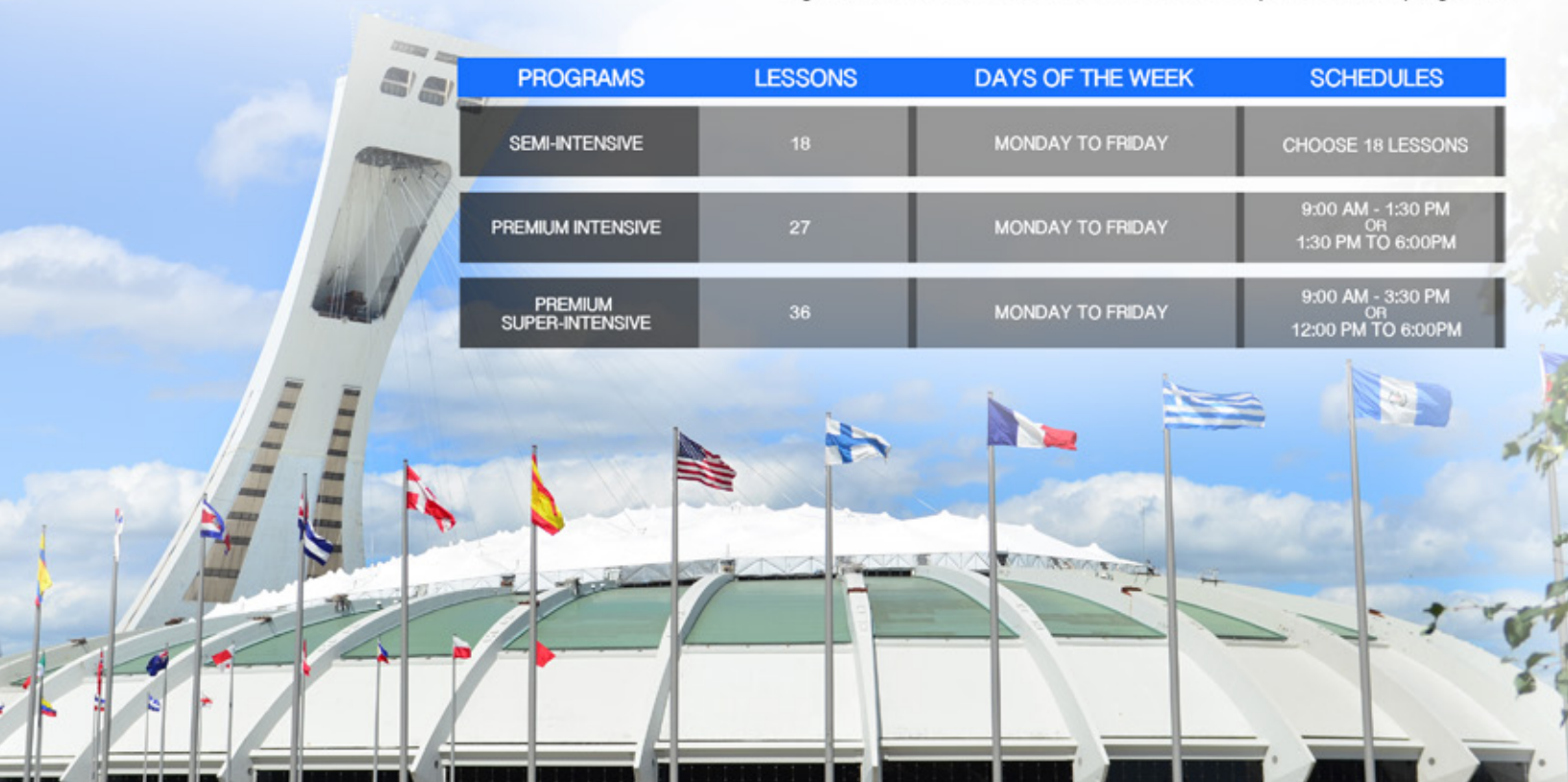
Semi-Intensive

Select classes that you would like to attend for a total of 18 lessons per week. Depending on your level, your classes may be scheduled in the morning or in the afternoon, from Monday to Friday. Semi-Intensive programs can be discussed and adjusted on a case-by-case basis according to each student's particular needs, interests (i.e. grammar, conversation, etc.) and availabilities. Do not hesitate to let us know exactly which language skills you would like to improve upon.

Please note that International students cannot register for Semi-Intensive courses if they plan on applying for a Study Permit. They can only register for Premium Intensive or Premium Super-Intensive programs.



PROGRAMS	LESSONS	DAYS OF THE WEEK	SCHEDULES
SEMI-INTENSIVE	18	MONDAY TO FRIDAY	CHOOSE 18 LESSONS
PREMIUM INTENSIVE	27	MONDAY TO FRIDAY	9:00 AM - 1:30 PM OR 1:30 PM TO 6:00PM
PREMIUM SUPER-INTENSIVE	36	MONDAY TO FRIDAY	9:00 AM - 3:30 PM OR 12:00 PM TO 6:00PM



# SUMMER CAMP

JUNE - JULY - AUGUST

LEARN ENGLISH OR FRENCH

## SAMPLE ACTIVITIES:

- Atwater Market + Lachine Canal Canoeing
- Olympic stadium + tower
- Old Port tour
- Botanical Garden
- Biodome
- Mount Royal
- St Joseph Oratory
- Jean Drapeau
- Niagara Falls
- Quebec city

\*Activities can be subject to changes based on weather and availability. Other arrangements will be made in case of cancellations.

IN ONE OF THE MOST BEAUTIFUL CITIES IN THE WORLD

## PACKAGE INCLUDES:

- English or French courses (27 lessons/w), Monday through Friday
- Homestay / Student residence
- Full-Board (3 meals/day)
- Registration fee
- ESL or FSL materials
- Airport transfer round trip
- Medical insurance
- Activities every day (Monday to Friday) and week-end suggestions
- Botanical garden, la Ronde, Bio-dome Montreal, BBQ
- Welcome and farewell party



**EduCanada**  
A world of possibilities  
Un monde de possibilités



FOLLOW US :

[f /miila.canada](https://www.facebook.com/miila.canada) [/miilamontreal](https://www.instagram.com/miilamontreal)

MONTREAL INTERNATIONAL  
INSTITUTE OF LANGUAGE ARTS

[www.miila.ca](http://www.miila.ca)



# WINTER FOR EVERYONE

Learn English or French in one of the most beautiful cities in the world

## START DATES

From December – March  
18 lessons per week

### Winter package includes:

- Activities
- Textbooks
- Health insurance
- Course certificate
- Wireless Internet at school
- Airport pick up and drop off
- Homestay / Student residence (3 meals – single room)
- Language courses (French or English)
- Registration and accommodation fees

Extras: Custodianship letter \$120

## STANDARD PACKAGE



## DURATION

2, 3, 4 OR MORE WEEKS

## 16 ACTIVITIES (4/WEEK):

- 4 weekend activities
- Skiing
- Snowboarding
- Montreal Bio-dome
- Montreal Planetarium
- Ice Skating
- Movie Night
- Tubing
- Outdoor skating
- Welcome Event
- Underground city tour
- Art Museum
- Snow Shoeing
- Old port of Montreal tour
- Snow festival

\*Activities can be subject to changes based on weather and availability. Other arrangements will be made on case of cancelations.



EduCanada  
A world of possibilities  
Un monde de possibilités



For more information please contact us:

FOLLOW US :

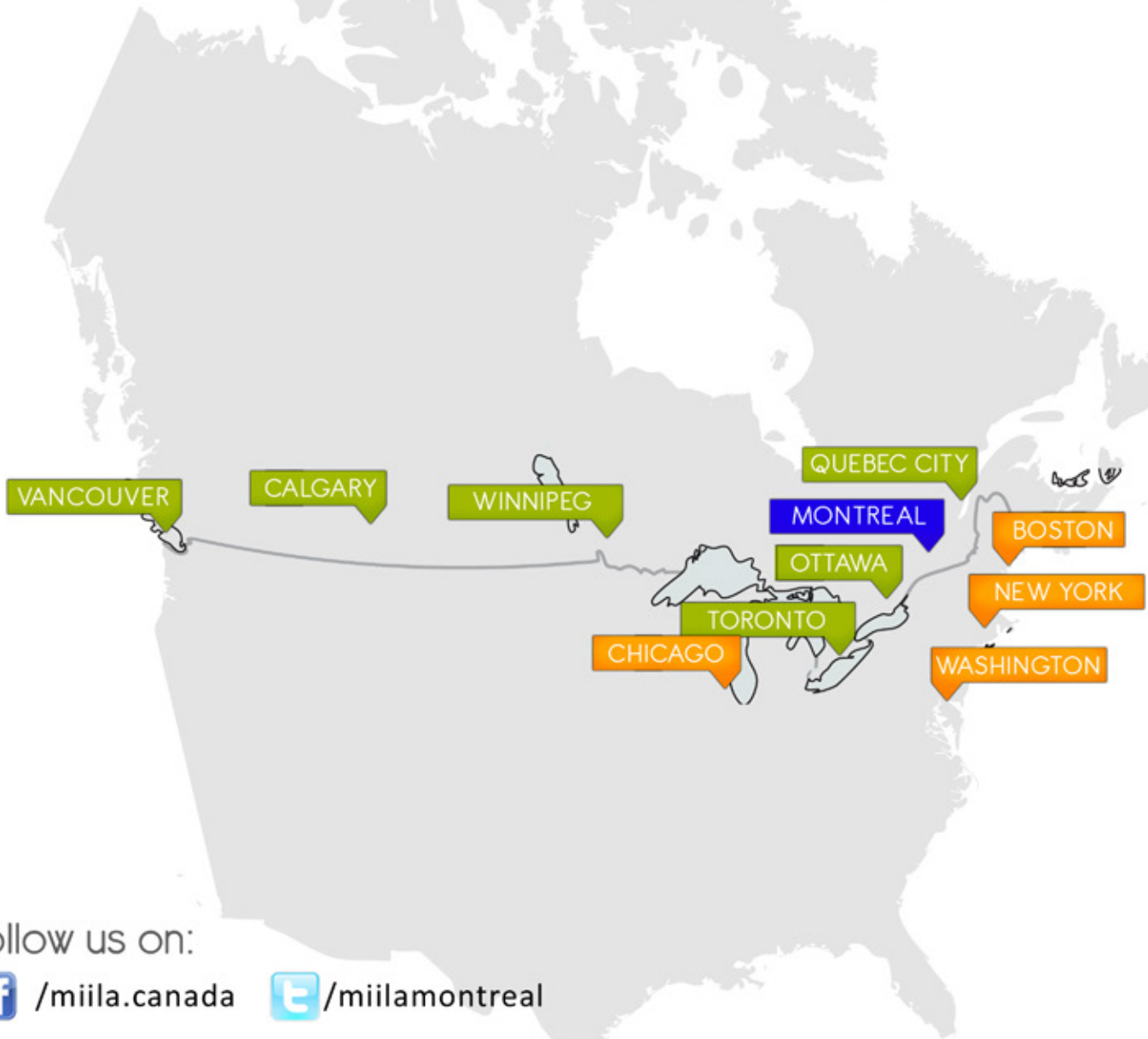
[f /miila.canada](https://www.facebook.com/miila.canada) [i /miilamontreal](https://www.instagram.com/miilamontreal)

MONTREAL INTERNATIONAL  
INSTITUTE OF LANGUAGE ARTS

[www.miila.ca](http://www.miila.ca)



EduCanada<sup>®</sup>  
A world of possibilities  
Un monde de possibilités



follow us on:

 /miila.canada  /miilamontreal

### Places and Cities to visit around Montreal:

Cities	Distance (by car/bus)
- Quebec City	3 hours
- Ottawa Capital of Canada	2 hours
- Niagara Falls	7 hours
- Toronto	6 hours
- Boston	5 hours
- Montmorency Falls	3 hours
- Mont - Tremblant	2 hours
- New York	6 hours
- Washington	9 hours
- Chicago	13 hours



